



GlamHAIR™  
POWERED BY

# STYLE GUIDE

**Expert advice to help you style like a pro.**

Welcome to the GlamHAIR™ Styling Guide, your go-to resource for achieving salon-worthy hair at home.

Discover expert tips, smart techniques, and style inspiration to unlock the full power of your AI-powered GlamHAIR™ dryer – no matter your hair type.

Unlock Now





# TECHNOLOGY BREAKDOWN

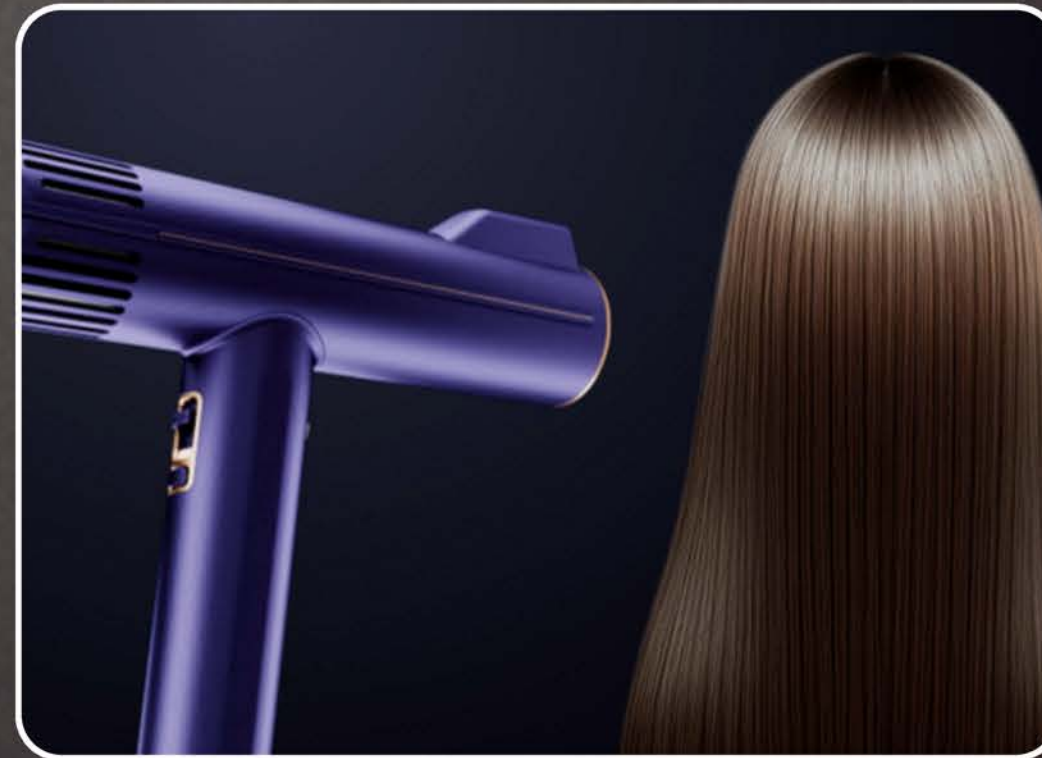
## 2x The Shine

**Ionic airflow** and **AI-powered heat control** work together to smooth the hair cuticle, boosting light reflection and leaving your strands visibly shinier – instantly.



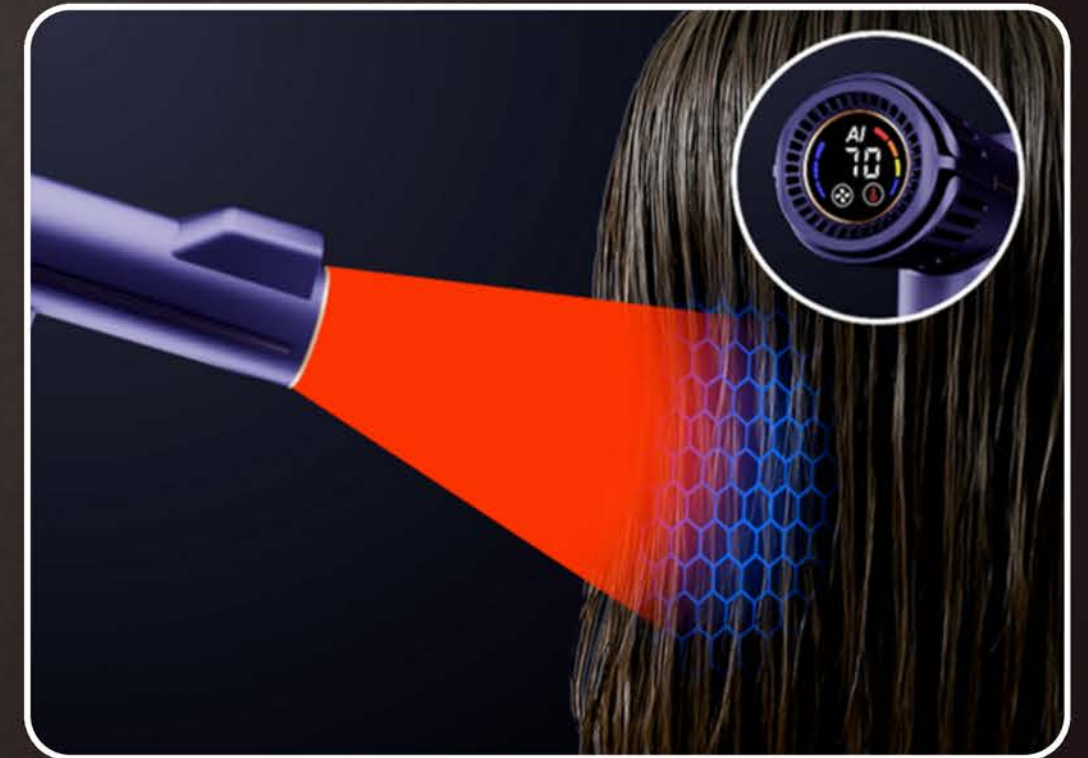
## 2x The Hydration

Unlike traditional dryers, GlamHAIR™ locks in moisture while drying, preserving natural oils and preventing over-drying for softer, healthier hair.



## 95% Less Heat Damage

Smart AI sensors regulate temperature in real-time to avoid scorching. You get pro-level results – without frying your hair.







# SleekFlow Nozzle

For Fast Drying & Smooth Styling







The SleekFlow Nozzle is your go-to for everyday drying. Its wide airflow helps you tackle larger sections of hair quickly and evenly, making it perfect for smoothing out your strands with minimal effort.

## HOW TO USE:

- Attach magnetically to your GlamHAIR™ dryer.
- Select medium to high airflow, paired with a round or paddle brush.
- Glide down the hair shaft from root to tip for a sleek, polished look.

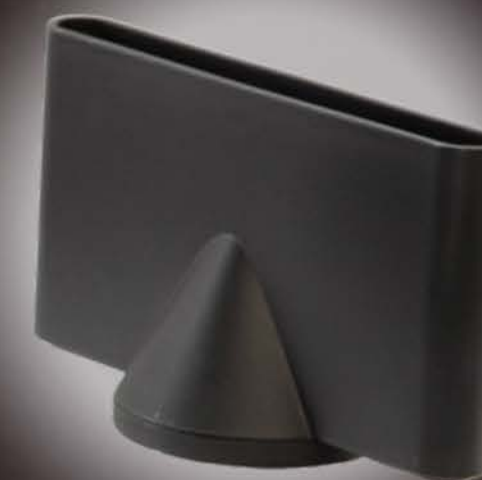


## PRO TIP 💡

Finish with the Cool Shot button to lock in shine and style.

## SAFETY NOTE:

Let attachments cool before handling, and keep all magnets away from pacemakers and electronic devices.



**BEFORE**

**AFTER**





# GlideWide Nozzle

For Precision & Flyaway Control







The GlideWide Nozzle offers concentrated airflow for styling with detail. Perfect for refining sections, taming flyaways, and framing the face, this attachment gives you salon-level control.

## HOW TO USE:

- Attach magnetically to your GlamHAIR™ dryer.
- Use low to medium airflow to target small areas.
- Ideal when used with a small round brush for detail work or fringe styling.



## PRO TIP 💡

Try smoothing each section toward your face for face-framing definition and polish.

## SAFETY NOTE:

Let attachments cool before handling, and keep all magnets away from pacemakers and electronic devices.



**BEFORE**

**AFTER**





# LuxCurl Diffuser

For Defined, Frizz-Free Curls







The LuxCurl Diffuser gently enhances your natural curls while reducing frizz. It disperses airflow softly and evenly, helping to define curl patterns without disturbing them.

## HOW TO USE:

- Attach magnetically to your GlamHAIR™ dryer.
- Use low heat and low airflow settings for best results.
- Flip your head upside down or tilt sideways to lift curls from the roots.
- Cup sections of hair with the diffuser and hold for a few seconds before moving on.

## PRO TIP 💡

Avoid touching or combing your curls after drying – this helps lock in definition and prevents frizz.

## SAFETY NOTE:

Let attachments cool before handling, and keep all magnets away from pacemakers and electronic devices.



**BEFORE**

**AFTER**



# THANK YOU FOR CHOOSING



We hope you enjoy styling your hair the smarter, healthier way – with the power of AI.

**Intelligent Care for Beautiful Hair**

